



COUNTY GOVERNMENT OF LAIKIPIA
RUMURUTI MUNICIPALITY

RUMURUTI MUNICIPALITY INVESTMENT
PLAN 2019- 2020



TABLE OF CONTENTS

Contents

MUNICIPAL GENERAL INFORMATION	5
ADMINISTRATIVE UNITS.....	5
ROAD AND AIR TRANSPORT	5
RUMURUTI MUNICIPAL URBAN INVESTMENT PLAN	7
INTRODUCTION.....	7
2. CONTEXT.....	7
3. INVESTMENT PRIORITIZATION	8
4. URBAN INVESTMENT PLAN AND BUDGET FY2019/2020.....	9
5. MUNICIPAL INVESTMENT BUDGET	10
6. PROCUREMENT.....	10

LIST OF TABLES

Table 1: Urban Investment plan and budget FY 2019/202012

Table 2: Municipal investment budget FY 2019/202012

LIST OF FIGURES

Figure 1: Aerial view of RUMURUTI Town.....6

Figure 2: Grant Chart for RUMURUTI Municipality Investment plan.....13

MUNICIPAL GENERAL INFORMATION

Laikipia County borders Samburu County to the North, Isiolo County to the North East, Meru County to the East, Nyeri County to the South East, Nyandarua County to the South, Nakuru County to the South West and Baringo County to the West. The County lies between latitudes $0^{\circ} 18''$ South and $0^{\circ} 51''$ North and between longitude $36^{\circ} 11''$ and $37^{\circ} 24'$ East. It covers an area of $9,462 \text{ km}^2$ and ranks as the 15th largest county in the country by land size. Map 1 shows the geographical position of Laikipia County in Kenya. The gazetted county headquarter is Rumuruti Town but has been hosted at Nanyuki Town since inception of devolution in 2013.

The expansion of urban areas in the County including in Rumuruti has been rapid and unplanned. There is therefore a pressing need to control development and promote sustainable development in Rumuruti Municipality, being the gazette County capital through a municipality plan within the proposed boundary.

ADMINISTRATIVE UNITS

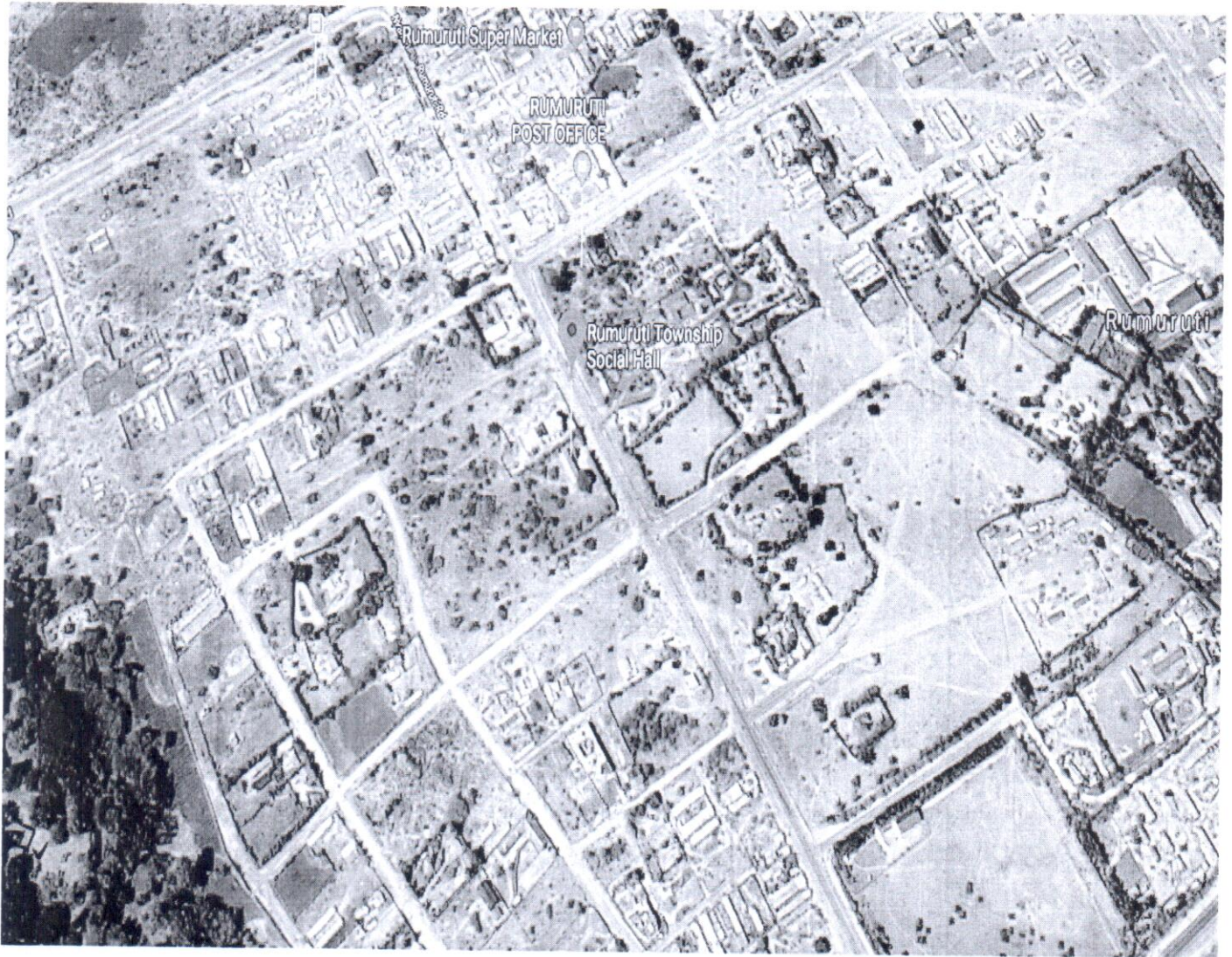
The administrative unit of RUMURUTI Municipality is the managerial and decision-making structures of the municipality that are used in handling socio-economic development issues affecting the people of the municipality.

ROAD AND AIR TRANSPORT

Rumuruti municipality has one very significant class b road, the Rumuruti- Maralal highway that connects to the neighboring county, Samburu.

Rumuruti municipality has capacity for development of an airstrip owing to the expansive land area allocated for air infrastructure.

Figure 1: Aerial view of Rumuruti Town



RUMURUTI MUNICIPAL URBAN INVESTMENT PLAN

INTRODUCTION

Rumuruti Municipal Urban Area or generally known as Rumuruti Town is the gazette County Government headquarters. Rumuruti Town has an estimated population of 32,993 according to the (2009 census).

Common to many rapidly growing urban areas in Kenya, Rumuruti Town has a number of challenges that require urgent investment.

2. CONTEXT

A) Objectives as Identified in the Five-Year Urban Institutional Development Plan

- Provision of legal frame work for effective management of the municipality;
- Enhance connectivity in the municipality;
- Improve solid waste management;
- Enhance and develop urban economic infrastructure i.e. markets and stalls; and
- Improve preparedness on fire and disaster management.

B) Activities Already Undertaken

- Municipal Charter has been drawn and forwarded to the County Assembly for approval;
- Municipal staff establishment is in place;
- Municipal Administration is in place having appointed the Interim Municipal Manager and other support unit/staff deployed;
- ❖ Finance and Budgeting;
- ❖ Town Engineer;
- ❖ Procurement Officer;
- ❖ Town Planner.
- ❖ Environment Officer.

The above Officers have been seconded to address and manage issues of Rumuruti Municipality in their respective departments.

3. INVESTMENT PRIORITIZATION

A) Priorities as Identified by the Urban Board

- Connectivity in particular roads;
- Solid waste management;
- Preparedness on fire and disaster management;
- Urban planning and policy formulation;
- Legal framework for enforcement and implementation; and
- Economic infrastructure i.e. markets and other stalls.

B) Priorities as Identified by County Government and Assembly

- Solid waste management;
- Preparedness on fire and disaster management;
- Connectivity in particular roads;
- Urban planning and policy formulation;
- Legal framework for enforcement and implementation;
- Economic infrastructure like markets;
- Adherence to the procurement procedures; and
- Urban planning.

Challenges

- Inadequate transport systems;
- Lack of legal framework in terms of policy as related to urban planning and management;
- Lack of waste management policies;
- Lack of development control guidelines and urban approvals;
- Lack of master plans and controlled development management;
- Poor drainage systems in Rumuruti Town;
- Lack of proper waste disposal sites in Rumuruti Town;
- Lack of urban policy and spatial/integrated urban plans to guide urban growth;
- Lack of sewerage systems;
- Lack of storm water drainage system and policy; and
- Lack of infrastructure like trailer parks, bus parks, bypass roads, street lights, car parks, taxi parks, built up markets, bus stages, boda boda parks, etc.

4. URBAN INVESTMENT PLAN AND BUDGET FY2019/2020

Table 1. URBAN INVESTMENT PLAN AND BUDGET FY 2019-2020									
Table 1	Activity	Timeframe		Expected outcome	UDG	Other - 1	Other - 2	Total	
		Start date	End date						
1	Fire Station				50,000,000			50,000,000	
Total	50,000,000								